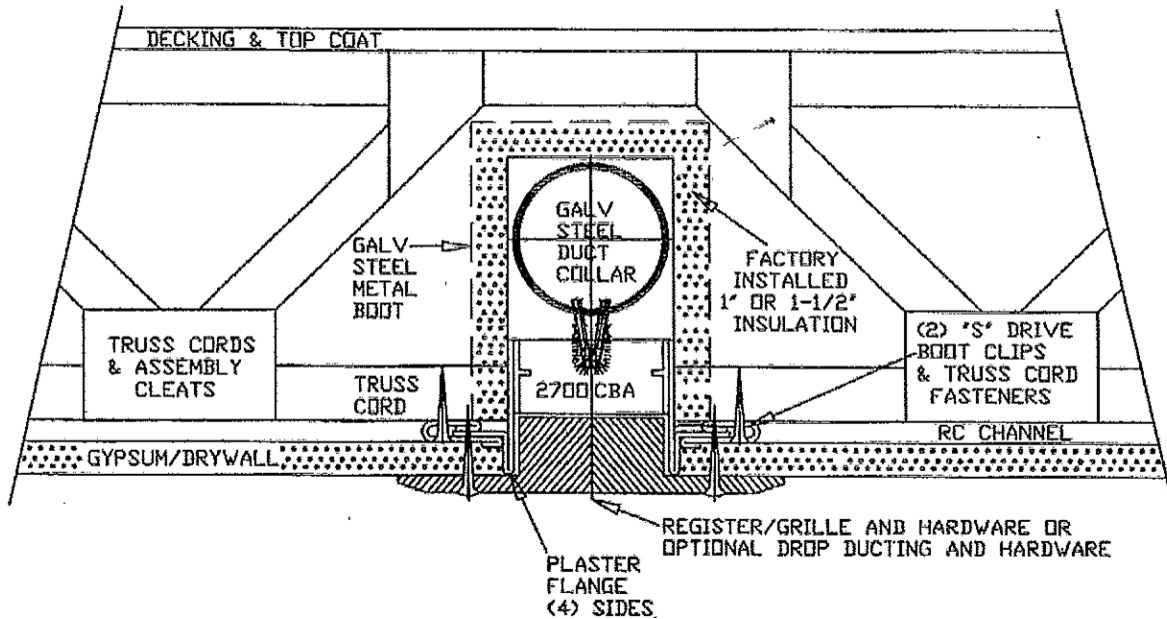


For 1 Hour Fire Rated wood truss floor/ceiling and roof/ceiling partitions, UL L-563 & P-544 Rated wood truss partition types

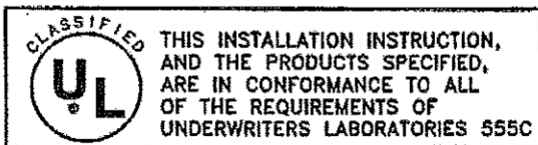


Installation Instructions:

1. Before installing the damper, open the blades and hook the fusible link on the opposite blade. Bend down the link catch to secure the link in the position.
2. Install (2) "S" Drive Boot Clips parallel & centered on the galvanized steel boot flanges.
3. Raise the 2700 Boot Assembly or 2750 Boot Assembly to the ceiling positioning the assembly boot clips under (2) truss cords. (Shim if required)
4. Fasten boot clips to the truss cords/joists or other structural members with a minimum of (1) fastener for each mounting point (4 places minimum) using #8-#12 drywall or wood screws x 1-1/4" long minimum.
5. Verify the plenum box location & height adjusting for "RC" channel depth as required to insure plaster flange penetration.
6. Verify the damper blade closure & function prior to assembly for gypsum or ceiling materials.
7. Install duct work and duct fasteners as per SMACNA Standards
8. Note: These assemblies will be provided with 1" or 1-1/2" fiberglass insulated boots/plenum boxes.
9. Install gypsum materials. Note: Insure that the space between the gypsum ceiling and damper/box at final assembly does not exceed 1/8" maximum on the sides of the box. (1/16" per side)
10. After ceiling materials have been installed & inspected, install and fasten the register/grille using a minimum of (2) #8-#10 x 3" long sheet metal, or drywall screws fastening through the ceiling material and into the boot galvanized steel flanges. Note: For Drop Ducting connect drop ducting as per SMACNA Standards.

Special Note:

11. Check the damper function upon completion



ALL INSTALLATIONS ARE SUBJECT TO LOCAL AUTHORITY APPROVAL PRIOR TO ORDERING DAMPERS AND DAMPER INSTALLATION