

Standard Features:

- Adjustable curved blade diffuser
- Six air patterns available
- Nylon bushings on adjustable blades prevent metal on metal rattle
- Diffuser available in sizes 6"x6" through 20"x20"
- Standard collar diameter is the same as the diffuser size
- 2" ADC compliant round collar with bead for ease of installation
- Rust resistant pre-coat with durable powder finish
- Soft White

Options:

- Recessed screwdriver operated Opposed Blade Damper (700CB-0) Square Collar
- Non-standard size collar (available in 4" through 20" collar)
- TVB – Thermal Vapor Blanket
- NGD – Narrow ceiling grid dimples for 9/16" T-Rails, changes O.D. to 23 29/32"
- Premium 3" round collar with bead (700CB-3in)

Air Pattern Options:

- 700CB-10A – One Way
- 700CB-20A – Two Way
- 700CB-20D – Two Way Corner
- 700CB-30A – Three Way
- 700CB-30D – Three Way
- 700CB-40 – Four way

Finishes:

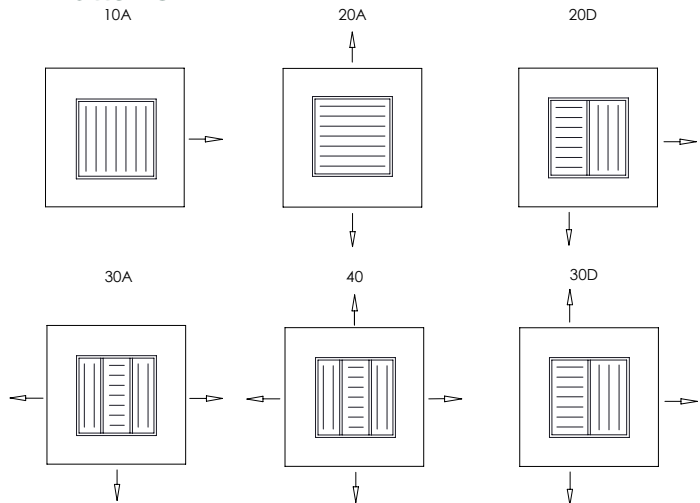
STANDARD COLORS

- Soft White
- Driftwood Tan

DESIGNER COLORS

- Black
- Bronze
- Storm Gray
- Cement Gray
- Aluminum Paint
- Coffee Tan
- Warm White
- Glossy White

Air Patterns:



Additional Information:

Submittal Notes

Project / Location:	
Engineer:	
Architect:	
Contractor:	